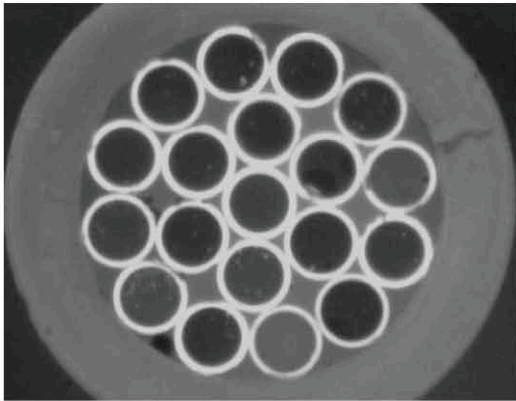


## Fiber Optic Bundles



### Product Features

- High Power Transfer Efficiency
- Wavelength Insensitivity
- High Power Handling
- Custom Configurations Available

### Product Applications

- High Power All-Fiber Lasers
- High Power Fiber Amplifiers
- Medical
- Defense

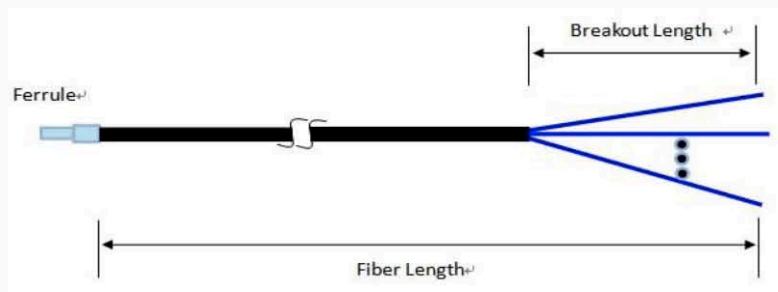
### Specifications

| Parameter             | Unit |    |                        |
|-----------------------|------|----|------------------------|
| Fiber Number          |      |    | 2, 3, 4, 7, 19, 37, 61 |
| Transfer Efficiency   | Typ. | %  | 98                     |
| Operating Power       | Max. | W  | 5                      |
| Operating Temperature |      | °C | -50 to +75             |
| Storage Temperature   |      | °C | -50 to +85             |

### Physical View



### Diagram



### Ordering Information

| F   | O   | B                             | 0                                       | 0   | 0 | 0 | 0 |  |  |  |  |  |
|---|---|-------------------------------|---|---|---|---|---|--|--|--|--|--|
| Fiber Number  | Fiber Type  | Fiber Length                  | Breakout Length                         | Connector   |   |   |   |  |  |  |  |  |
| 1=2-Fiber<br>2=3-Fiber<br>3=4-Fiber<br>4=7-Fiber<br>5=19-Fiber<br>6=37-Fiber<br>7=61-Fiber<br>S=Specify | 1=105/125µm<br>(NA=0.22)<br>2=62.5/125µm<br>3=50/125µm<br>4=Plastic fiber<br>5=G625 or<br>Equivalent<br>S=Specify | 1=1.0m<br>2=1.5m<br>S=Specify | 1=15cm<br>2=25cm<br>3=35cm<br>S=Specify | 0=None<br>1=FC/PC<br>2=ST<br>3=ST/PC<br>S=Specify |   |   |   |  |  |  |  |  |

Note: 1. Central Wavelength can be customized for different applications.  
2. All specifications are before connectors and are subject to change without notice.