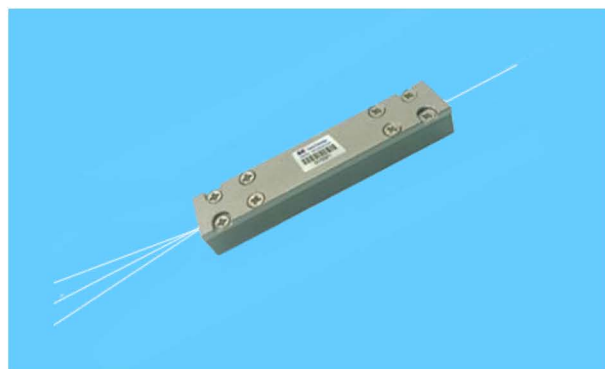


## (2+1)×1 PM Pump and Signal Combiners



### Product Features

- High Power Coupling Efficiency
- Preservation of Mode Content
- Wavelength Insensitive
- Custom Configurations Available

### Product Features

- Fiber Laser
- Fiber Laser Seed Amplifiers
- Fiber Laser Power Amplifiers
- Industrial, Telecom & Research

### Specifications

Parameter		Unit	Values				
Port Configuration		/	(2+1)×1				
Pump Input Wavelength Range		nm	800~1000				
Signal Wavelength		nm	1030~1080		1530~1580		
Signal Insertion Loss	Max.	dB	0.7				
Pump Transfer Efficiency	Typ.	%	90~95				
Pump Transfer Efficiency	Min.	%	85				
Polarization Extinction Ratio	Min.	dB	18				
Return Loss	Min.	dB	45				
Operating Power Per Input Channel	Max.	W	5	10	25	50	100
Operating Temperature		°C	-5~+75				
Storage Temperature		°C	-50~+85				
Package Size		mm	M13=65×12×7.4			M14=100×15×10	

### General Configuration for (2+1)×1 PM Pump and Signal Combiner

Configuration	Signal Wavelength(nm)	Pump Fiber	Input Signal Fiber	Output Fiber	Signal IL	Transfer Efficiency
(2+1) ×1	1030~1080	105/125 0.22	PM980	PM10/125 DC	0.5dB	90%
(2+1) ×1	1030~1080	105/125 0.22	PM05/130 DC	PM06/125 DC	0.3dB	90%
(2+1) ×1	1030~1080	105/125 0.22	PM05/130 DC	PM10/125 DC	0.5dB	90%
(2+1) ×1	1030~1080	105/125 0.22	PM06/125 DC	PM06/125 DC	0.5dB	90%
(2+1) ×1	1030~1080	105/125 0.22	PM10/125 DC	PM10/125 DC	0.3dB	90%
(2+1) ×1	1030~1080	105/125 0.22	PM20/125 DC	PM20/125 DC	0.7dB	90%
(2+1) ×1	1030~1080	200/220 0.22	PM25/250 DC	PM25/250 DC	0.5dB	90%
(2+1) ×1	1030~1080	200/220 0.22	PM20/400 DC	PM20/400 DC	0.5dB	90%
(2+1) ×1	1530~1580	105/125 0.22	PM12/130 DC	PM12/130 DC	0.5dB	90%
(2+1) ×1	1530~1580	105/125 0.22	PM12/130 DC	PM25/300 DC	0.5dB	90%

### Ordering Information

P	M	C	2	1							
					Signal Wavelength	Operating Power	Pump Input	Signal Input	Output Fiber	Package	Fiber Length
					1=1030~1080; 2=1530~1580	05=5W 10=10W 25=25W 50=50W A0=100W S0=Specify	1=105/125 0.22; 2=200/220 0.22; S=Specify	1=PM05/130 DC; 2=PM06/125 DC; 3=PM10/125 DC; 4=PM20/125 DC; 5=PM25/250 DC; 6=PM20/400 DC; 7=PM12/130 DC; 8=PM25/300 DC; 9=PM980; S=specify.	2=PM06/125 DC; 3=PM10/125 DC; 4=PM20/125 DC; 5=PM25/250 DC; 6=PM20/400 DC; 7=PM12/130 DC; 8=PM25/300 DC; S=specify.	P=M13; Q=M14; S=Specify	0=0.5m 1=0.75m 2=1.0m 3=1.5m 4=2.0m S=specify

Note:1.Configuration can be customized for different applications.  
2.All specifications are subject to change without notice.