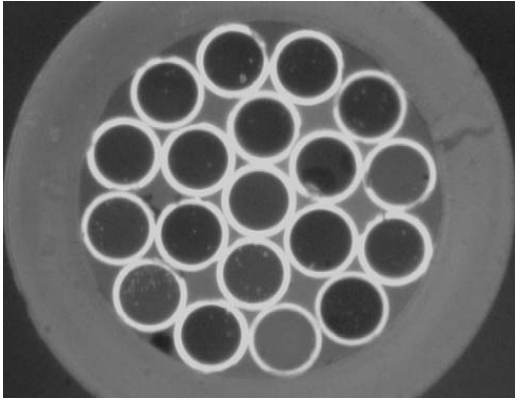


# Fiber Optic Bundles



## Product Features

- High Power Transfer Efficiency
- Wavelength Insensitivity
- High power handling
- Custom Configurations Available

## Product Applications

- High Power All-Fiber Lasers
- High Power Fiber Amplifiers
- Medical
- Defense

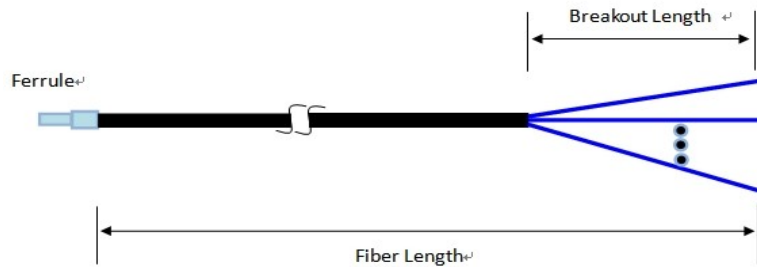
## Specifications

| Parameter             | Unit |    |                        |
|-----------------------|------|----|------------------------|
| Fiber Number          |      |    | 2, 3, 4, 7, 19, 37, 61 |
| Transfer Efficiency   | Typ. | %  | 98                     |
| Operating power       | Max. | W  | 5                      |
| Operating Temperature |      | °C | -50 to +75             |
| Storage Temperature   |      | °C | -50 to +85             |

## Physical View



## Diagram



## Ordering Information

| F   | O  | B                             | O                                       | O   | O | O |  |  |  |  |  |
|---|--|-------------------------------|---|---|---|---|--|--|--|--|--|
| Fiber Number  | Fiber Type   | Fiber Length                  | Breakout Length                         | Connector   |   |   |  |  |  |  |  |
| 1=2-Fiber<br>2=3-Fiber<br>3=4-Fiber<br>4=7-Fiber<br>5=19-Fiber<br>6=37-Fiber<br>7=61-Fiber<br>S=Specify | 1=105/125um<br>(NA=0.22)<br>2=62.5/125um<br>3=50/125um<br>4=Plastic fiber<br>5=SMF28e or<br>G.625<br>series fiber<br>S=Specify | 1=1.0m<br>2=1.5m<br>S=Specify | 1=15cm<br>2=25cm<br>3=35cm<br>S=Specify | 0=None<br>1=FC/PC<br>2=ST<br>3=ST/PC<br>S=Specify |   |   |  |  |  |  |  |

Note: 1. Central Wavelength can be customized for different applications.  
2. All specifications are before connectors and are subject to change without notice.